

SpamTitan Install for VMware®

Preparation

- ✓ Choose a suitable server that can support running a virtual machine with the following specification:
 - 512MB memory, 40GB disk and a Bridged network device.
- ✓ You can use any VMware product for Windows or Linux including the VMware Player (free), the VMware workstation or the VMware server.
- ✓ Get a trail license from SpamTitan via <http://www.spamtitan.com/downloads>

Installation

Download SpamTitan for VMWare from <http://www.spamtitan.com>.

Unzip the file into a location on your server. Open the vmx file using your VMWare application.

Run the virtual machine the SpamTitan application will begin to boot, when complete you will see the following screen on your VMWare console:

```
Welcome to the SpamTitan Setup Program

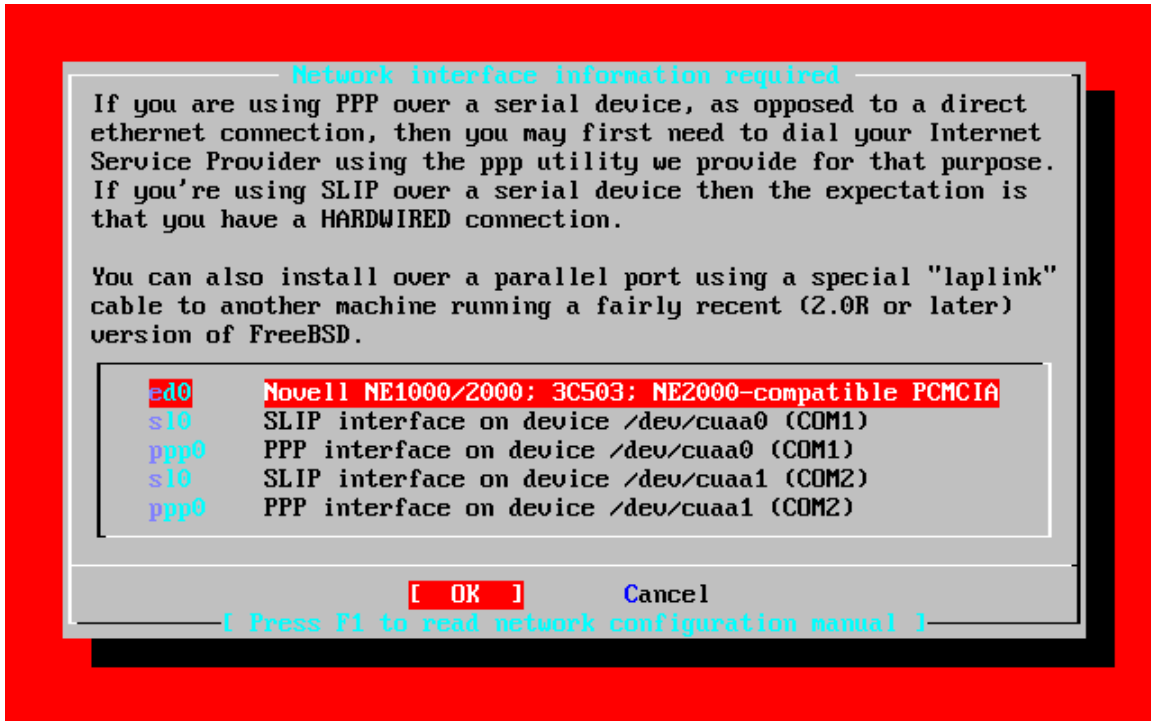
-----
NOTE: The system will REBOOT after you set the IP address
-----

Press Y to Enter setup, any key to SKIP:
```

Enter the setup program by typing “Y” followed by the ENTER key.

NOTE: *When you have completed assigning your IP address the VM machine will reboot automatically.*

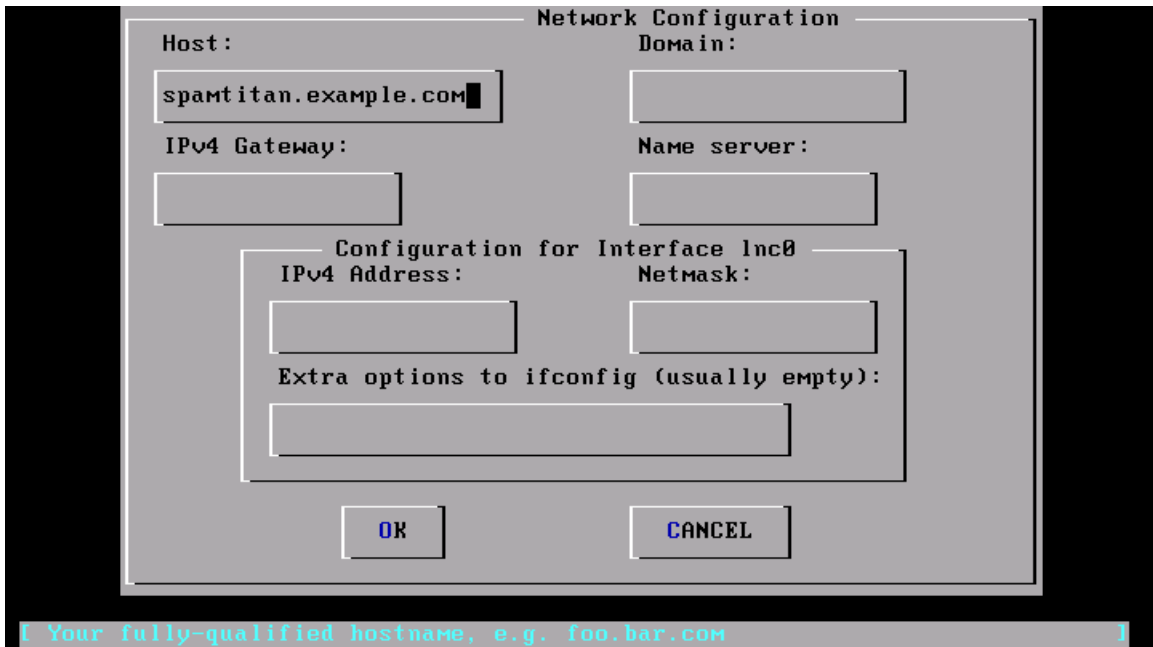
The following screen will appear to prompt you to select the Ethernet device of your server. Depending on your hardware this can be xl0, ed0, fxp0, or em0. Normally you select the first item on the list below unless you have multiple Ethernet devices. Using the arrow key to select a different device type ENTER to select the highlighted device.



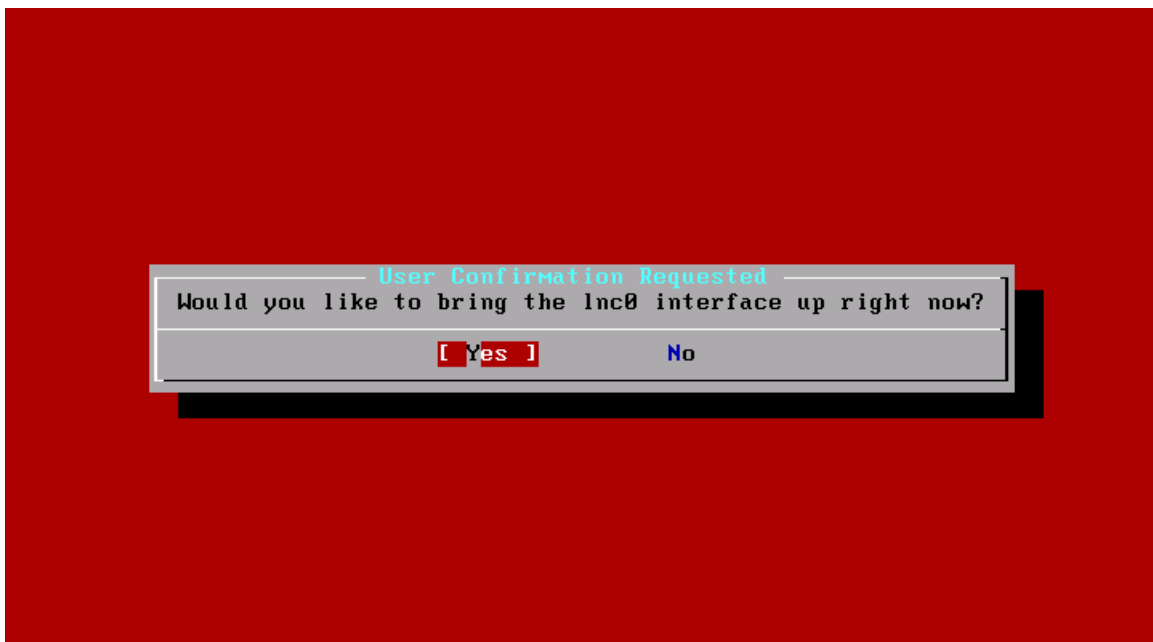
Now you will need to configure your interface. Select **NO** for IPv6 and DHCP. Then, enter the following data into the screen below.

Field	Description
Host	FQDN (Fully qualified hostname) e.g. spamtitan.example.com
IPv4 Gateway	The default router for your network
Name Sever	The IP address of your DNS server
IPv4 Address	The IP address you wish to assign to the Appliance
Net mask	e.g. 255.255.255.0

When complete hit the OK button use the TAB key to move between fields.



Select YES for the following screen



You have completed assigning your IP address the VMware machine will reboot.

You will then see the following message.

```
If your IP address is <Assigned IP address> browse to http://<IP address> to start

Welcome to the SpamTitan Setup Program

-----
NOTE: The system will REBOOT after you set the IP address
-----

Press Y to Enter setup, any key to SKIP:
```

Using your favourite browser go to the SpamTitan URL.
Logon as Email Address:admin and Password:hiadmin.

Configure and start to your SpamTitan appliance, for further instructions please refer to the Admin Guide,

http://download.spamtitan.com/manuals/spamtitan_admin.pdf.